

## DO YOU REQUIRE BACKFLOW PREVENTION?

You will be required to install backflow prevention if the findings from your site visit conclude that your property poses a level of risk of backflow. This determination will be based on a number of factors, such as the activity conducted on your property, chemicals or equipment used and stored, or cross-contamination risks.

### *Installing backflow protection*

A backflow prevention device not only protects your drinking water supply from contaminants, but it protects your neighbours and your community.

Reduced Pressure Zone (RPZ) Valves, Double Check Valves and managed air gaps are suitable forms of backflow protection.

Installation must be completed by a suitably qualified person and in accordance with Clutha District Council's standards.

### *Where will the device be installed?*

Backflow devices are typically installed at the boundary of a property, either in-ground, or above ground in a cage or protective box. The way the device is installed will depend on the level of protection required. The device is installed at the boundary to protect the potable water supply from potential contamination from your property.

### *What happens after it is installed?*

Backflow prevention devices require annual certification, which must be carried out by an Independently Qualified Person. Annual testing is needed to certify that the device remains functional and is operating as it should be. Annual certification is at the cost of the property owner. Council can arrange for the test to be carried out on the property owner's behalf, at cost value. When arranging your own certification, please email your test results to [backflowprevention@cluthadc.govt.nz](mailto:backflowprevention@cluthadc.govt.nz).

### *How do I find an Independently Qualified Person (IQP)?*

The National IQP register is maintained by Timaru District Council and is available to search on their website.

Please visit [www.timaru.govt.nz/iqp-search](http://www.timaru.govt.nz/iqp-search).

### *What if my land use activity changes?*

If your land use activity changes and you think your level of backflow risk has changed, please contact Council to arrange a follow up inspection to reassess your backflow risk.

## MORE INFORMATION

For more information, please visit our website or scan the QR code below.

[www.cluthadc.govt.nz/backflow-prevention](http://www.cluthadc.govt.nz/backflow-prevention)



Alternatively, please get in touch with Clutha District Council.

Phone: 0800 801 350

Email: [backflowprevention@cluthadc.govt.nz](mailto:backflowprevention@cluthadc.govt.nz)

# BACKFLOW PREVENTION

IN THE CLUTHA DISTRICT



Backflow poses a serious risk to our public water supply, and can affect the quality of our drinking water.

Clutha District Council is working with property owners to help prevent the risk of backflow in our communities.



CLUTHA DISTRICT COUNCIL  
[www.cluthadc.govt.nz](http://www.cluthadc.govt.nz)

# KEEPING WATER SAFE IN OUR COMMUNITIES

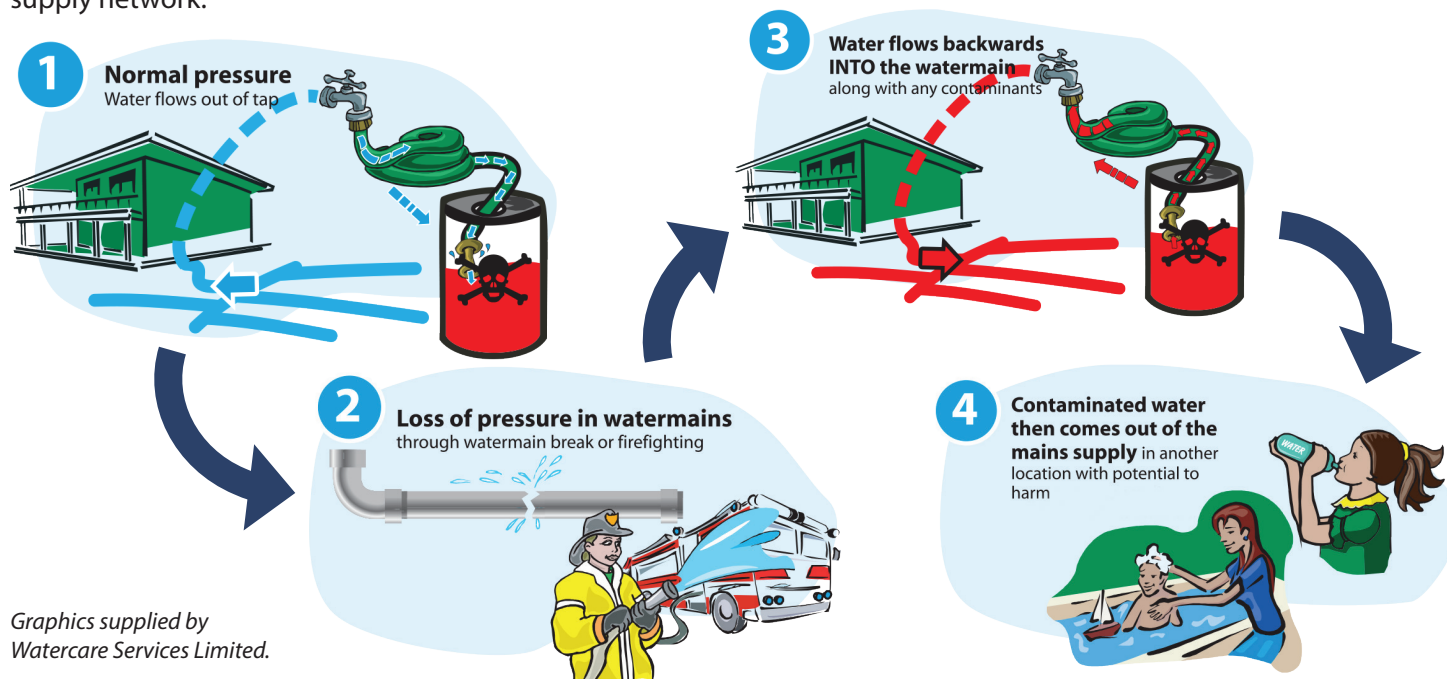
Clutha District Council is committed to keeping our drinking water safe for our communities. That's why we are working with property owners to help prevent the risk of contaminants entering our water supplies.

## WHAT IS BACKFLOW?

Backflow is one of the biggest risks to our public water supply. It occurs when water flows back into the network from a private property and, depending on the activity that occurs on the land, water entering the public supply in a backflow event could contain chemicals or contaminants.

## HOW DOES BACKFLOW OCCUR?

Water pressure within the network ensures water is delivered to your property. If the water pressure changes, backflow can occur either by back-siphonage or decreases in pressure, which may allow contaminants and chemicals to flow into the water supply network.



Graphics supplied by Watercare Services Limited.

## PREVENTING BACKFLOW

Council has developed a Backflow Prevention Programme and is opting to manage the risk by requiring installation of backflow prevention devices where there is a medium or high risk of backflow occurring.

Council will work together with the public to locate, assess, and mitigate areas of risk at the boundaries of industrial, rural and commercial properties.

## BACKFLOW PREVENTION DEVICES

Backflow prevention devices are an effective tool for preventing backflow. Backflow prevention may be required where a risk of contamination is identified to the potable water network.

## WHAT ARE OUR LEGAL RESPONSIBILITIES?

Under the Water Services Act 2021, we all have a duty to protect against the risk of backflow.

## YOUR RESPONSIBILITY AS A PROPERTY OWNER

You are legally responsible for ensuring activities you conduct don't contaminate the public water supply. If you carry out activities on your property which use substances that could enter the public water supply (and cause harm), and it is deemed this poses a risk to the water supply, it is your obligation to install backflow protection. Any costs associated with installation and operation of the protection are your responsibility.

It is also your duty to ensure the backflow device is maintained and tested each year.

Identified property owners have a responsibility to have adequate backflow prevention in place and/or implement measures to prevent water from backflowing into the potable water supply. This is required under the Clutha District Council Water Services Bylaw 2019.

## OUR RESPONSIBILITY

Council's responsibility is to protect the public water supply network against the risk of backflow. Council is required to determine when it is necessary for a backflow protection device to be used, maintain a register of the devices, ensure devices are tested at least annually, and have a Drinking Water Safety Plan in place. This is required under the Water Services Act 2021.

## SITE VISITS

A council officer will make contact with identified property owners to arrange a site visit. After a site visit is completed a level of risk will be determined, and a council officer will contact the property owner again to discuss the next steps.

*Please visit [www.cluthadc.govt.nz/backflow-prevention](http://www.cluthadc.govt.nz/backflow-prevention) or contact the Clutha District Council for more information.*

**Phone: 0800 801 350**

**Email: [backflowprevention@cluthadc.govt.nz](mailto:backflowprevention@cluthadc.govt.nz)**